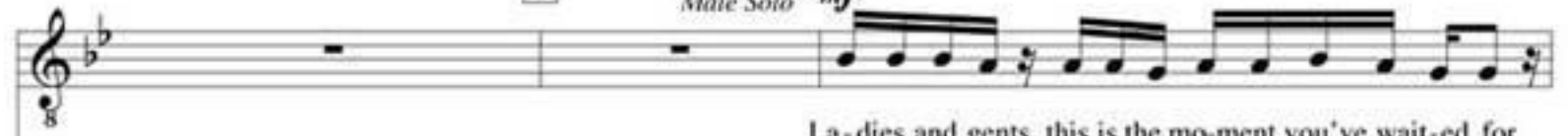


II

Male Solo *mf*

Hand Clap



Whoa

Foot Stomp



II

N.C.

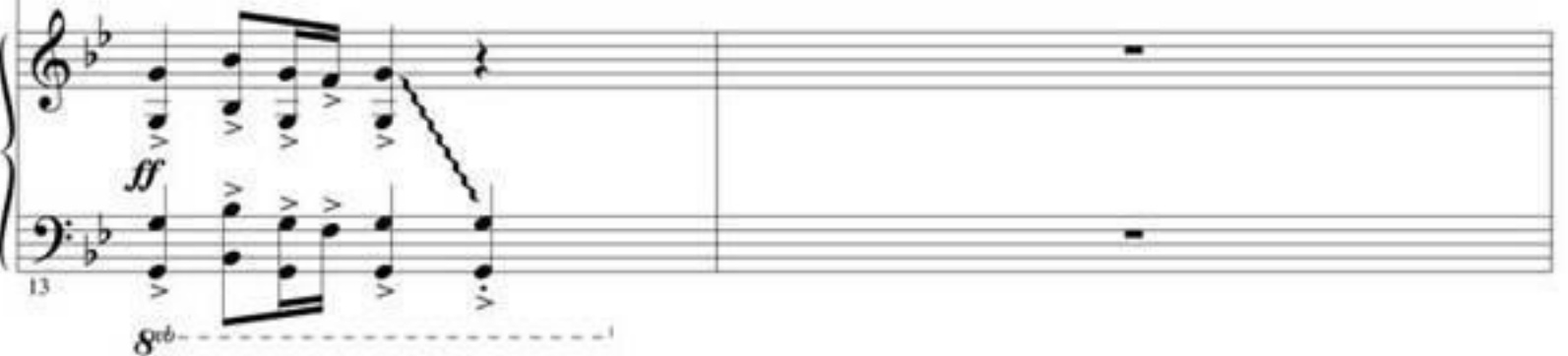


Hand Clap



Whoa

Foot Stomp



ver you. Oh! This is the great - est show! We light it up, we won't come

Gm E♭5 N.C. B♭ F(add4)

30 (8<sup>th</sup>)

down And the sun can't stop us now Watch-in' it come true, it's tak-in' o -

*unis.*

Gm E♭5 B♭ D7

32 (8<sup>th</sup>)

Small Mixed Group *f* 36 Ah

ver you. Oh! This is the great - est show! Whoa Co -

*unis. f*

Gm E♭5 N.C. Gm 36

34 (8<sup>th</sup>)

From THE GREATEST SHOWMAN  
**The Greatest Show**

For SAB\* and Piano with Optional Instrumental Accompaniment

Duration: ca. 4:00

Arranged by  
**MARK BRYMER**

Words and Music by **BENJ PASEK**  
 and **JUSTIN PAUL**

Driving, with swagger (♩ = ca. 78)

N.C.

Piano

The piano introduction consists of two measures in 4/4 time. The right hand features a rhythmic pattern of eighth notes with a descending eighth-note pair, while the left hand plays a steady eighth-note accompaniment. The key signature has one flat (B-flat).

Soprano *mf* Hand Clap

Alto Whoa

Baritone *ff* Foot Stomp

The first system of vocal and instrumental notation. The Soprano part has a melodic line with a hand clap on the second measure. The Alto part has a vocal line with the word "Whoa" and a horizontal line. The Baritone part has a rhythmic line with a foot stomp on the second measure. The piano accompaniment continues from the introduction.

The piano accompaniment for the first system, showing the right and left hand parts with dynamic markings and articulation.

Hand Clap

Whoa

Foot Stomp

The second system of vocal and instrumental notation, continuing the vocal parts and piano accompaniment.

The piano accompaniment for the second system, showing the right and left hand parts.

\* Available separately: SATB (00251983), SAB (00251984),  
 SSA (00251985), ShowTrax CD (00251987)

Combo parts available as a digital download (00251986)

(tpt 1-2, ass, tbn, bsx, syn, gtr, b, dm)

halleonard.com/choral

Visit [choralmusicdirect.com](http://choralmusicdirect.com) to purchase and download digital scores and audio mp3s.

DO NOT  
 PHOTOCOPY



This choral arrangement is for concert use only. The use of costumes, choreography  
 or other elements that evoke the story or characters of this musical work is prohibited.

Copyright © 2017 Breathelike Music, Pick In A Pinch Music and T C F Music Publishing, Inc.  
 This arrangement Copyright © 2017 Breathelike Music, Pick In A Pinch Music and T C F Music Publishing, Inc.  
 All Rights for Breathelike Music and Pick In A Pinch Music Administered Worldwide by Kobalt Songs Music Publishing  
 All Rights Reserved Used by Permission